

Laboratory furniture in 15 days!



Simple[®]pro
Laboratory furniture

Always by your side!

Letter of guarantee

We are always by your side!

That's why we guarantee you:

1. Best-possible working conditions – which means that you just have to share your dreams of the new interior of your laboratory with us, and the rest will be done by our experts. We do our best to ensure smooth cooperation between you and us!
2. Shortest-possible manufacturing period – we manufacture the furniture presented in this catalogue in as little as 15 calendar days! We value your time and offer you the fastest turnaround times!
3. Longest-possible warranty periods – 1,000 and 1 days! We guarantee that our furniture will bring you joy for a long time, and we give you time to test its quality in action!
4. Easiest-possible delivery conditions – no matter the Russian or CIS city you live in, we will find a way to deliver the furniture to you! We guarantee that it will safely reach your front doors! All you have to do is to open them wide and smile!
5. Simplest-possible assembly process – our furniture is easily assembled, even by women! On top of this, you can access our service team at any time to ensure that the work is done in the fastest and most professional manner!

Our furniture is a true indication of our care for you, and therefore, a reflection of your ideas and wishes – made real by our hands!

We hope that our meetings in your laboratory every morning will be mutually-pleasant and productive!

*Sincerely Yours,
The Simple Pro Team*

Want to work in such a laboratory?



Всегда на Вашей стороне!
Always by your side!

Всегда на Вашей стороне!
Always by your side!



Contents

Work-surface materials.....	6
-----------------------------	---

EXHAUST FUME CHAMBERS

Metal exhaust fume chamber	7
Chemical exhaust fume chamber	8
Laboratory exhaust fume chamber	9
Demonstrational exhaust fume chamber.....	10
Exhaust fume chamber for muffle furnaces.....	11
Exhaust hoods.....	12
Reference dimensions of exhaust fume chambers.....	12

LABORATORY WORKBENCHES

Laboratory workbench.....	15
Laboratory workbench with shelf.....	15
Laboratory workbench with upper filing cabinet.....	16
Laboratory workbench with two shelves.....	16
Chemical laboratory workbench (with service attachment).....	17
Titration workbench.....	17
Island workbench.....	18
Corner laboratory workbench (on load-bearing frame).....	18
Weighting workbench.....	19
Combined weighting workbench.....	19
Cabinet workbench with doors.....	20
Cabinet workbench with doors and drawer.....	20
Movable workbench.....	22
Writing/computer desk.....	22

LABORATORY CABINETS

Cabinet for labware.....	23
Cabinet for laboratory instruments.....	24
Reagents cabinet.....	25
Wardrobe cabinet.....	26
Acid-proof reagents cabinet.....	27
Filing cabinet.....	27
Suspended cabinet.....	28

WASHERS

Laboratory washer.....	31
Deep laboratory washer.....	32
Laboratory chemical washer	33

FILING CABINETS

Rolling filing cabinets.....	36
Suspended filing cabinets.....	37
Filing cabinets on legs.....	38
Suspended acid-proof filing cabinets.....	39

LABORATORY CHAIRS

Chair GEMA.....	42
Chair TEK0.....	42
Chair S1.....	43

LABORATORY STOOLS

Stool DECO.....	44
Stool T2.....	44

METAL RACKS

Rack ST-12.....	46
Rack with guard bars ST-13.....	46



Work-surface materials

Melamine

22-mm-thick laminated chipboard, whose sawn ends are finished with 2-mm plastic edges in order to increase their water resistance and durability. Not affected by short-term exposure to diluted acids, alkalis or organic solvents. Withstands short-term exposure to temperatures up to 100 degrees C.

Jointless granite

Monolithic slab made of natural stone. Resistant to high temperatures and humidity exposure. Does not change its structure after being exposed to most types of acids and alkalis. Density: 2,600 kg/m³, features a low abrasive index of 0.5 g/cm².

CPL

CPL is a 0.5-mm-thick high-pressure composite plastic, attached to 25-mm-thick water-resistant laminated chipboard, whose sawn ends are finished with 2-mm plastic edges in order to increase their water resistance and durability. Not affected by short-term exposure to diluted acids, alkalis or organic solvents. Withstands short-term exposure to temperatures up to 140 degrees C and offers high wear-resistance properties.

Lab HPL

Lab HPL is a 16-mm-thick monolithic ultra-high-pressed chemical-resistant plastic, specially designed for laboratories and medical institutions by Wilsonart, a worldwide leading company in plastics production, whose head office is located in the USA (10 factories around the world). This material features high-impact, water, wear resistances and high anti-bacterial properties. Exposure-resistant to temperatures up to 135 degrees C; also withstands short-time exposure to higher temperatures. Features high-resistance to long-term exposure to almost all concentrated acids and alkalis.

Polypropylene

Widely used polymeric material. Features high resistance to most types of concentrated acids, including fluorhydric acid. Characterized by high mechanical resistance, water-proof qualities, resistance to fairly-high temperatures – melting point around 170 degrees C. Limited abrasive resistance.

Stainless steel

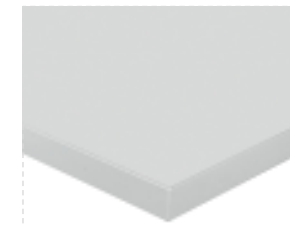
Boasts impressive resistance to high temperatures, mechanical strength, and good chemical resistance to a wide-ranging number of substances.



Melamine



Jointless granite



CPL



Lab HPL



Polypropylene



Stainless steel



Seamless granite

Metal exhaust fume chambers

The cabinet's exhaust fume chamber is made of steel sheet with polymeric coating. It has three exhaust points – in the upper, middle and lower sections of the workspace. The chamber is installed on solid dismountable metal with polymeric coating. In order to compensate for any possible floor unevenness, the frame is equipped with adjustable legs (0-30 mm).

The station is recommended for the performance of work involving a wide range of chemical substances, including highly-flammable liquids. It can also be used in high humidity conditions. It is suitable for direct contact with water and other liquids – its polymeric coating protects the metal against corrosion. Can be used for the performance of work involving concentrated acids and alkalis, except for cases associated with the evaporation of concentrated acids. For the aforementioned type of operation, we recommend using a chemical exhaust chamber (model LK -SVP).

LIST OF STANDARD EQUIPMENT:

- Protective screen made of shock-proof “triplex” glass (or Plexiglas – on request), with the possibility of adjustment to any height;
- Fluorescent lamp 2x18 W (level of protection IP65);
- Splash-proof electrical sockets 220 V (2 pcs.);
- Steel flange for air vent connection (D = 200 mm);
- Anti-spillage curb;
- Automatic shutoff system 16 A.

LIST OF OPTIONAL EQUIPMENT:

- Gloves for protective screen (for Plexiglas screen only);
- Stand-alone fan;
- Gas supply valve;
- Water supply valve;
- Mixer;
- Polypropylene sink drains (250x100x150 mm; 300x300x200 mm; 400x400x300 mm);
- Built-in heating panel (glass ceramics);
- Explosion-proof lighting fixture;
- Electrical socket block with automatic shut-off system 16 A;
- Suspended cabinets TD (steel)* (see pages 43-46);
- Cabinet exhaust.

Model	Dimensions (WxDxH), mm	Ceramic	Jointless granite	Lab HPL	Stainless steel
LK-900 SV-MET	900x690x2,000				
LK-1200 SV-MET	1,200x690x2,000				
LK-1500 SV-MET	1,500x690x2,000				
LK-1800 SV-MET	1,800x690x2,000				

LK-1200 SV-MET

* Cabinet LK-1200 TD-V (steel) is not included on the list of standard equipment

All prices shown in GBP, VAT included.

* Reference dimensions – see page 12

Exhaust fume chambers

Chemical exhaust fume chamber

The cabinet's exhaust fume chamber is made of monolithic polypropylene sheet, featuring high chemical resistance properties. It has two exhaust points – in the upper and lower sections of the workspace. The chamber is installed on solid dismountable metal with polymeric coating. In order to compensate for any possible floor unevenness, the frame is equipped with adjustable legs (0-30 mm).

The chamber is recommended for the performance of work involving aggressive chemical substances, including concentrated acids and their vapors. It can also be used in high-humidity conditions. It is suitable for direct contact with water and other liquids – the cabinet has almost no corrosive elements.

LIST OF STANDARD EQUIPMENT:

- Protective screen made of shock-proof “triplex” glass (or Plexiglas – on request), with the possibility of adjustment to any height;
- Fluorescent lamp 2x18 W (level of protection IP65);
- Splash-proof electrical sockets 220 V (2 pcs.);
- Steel flange for air vent connection (D = 200 mm);
- Anti-spillage curb;
- Automatic shutoff system 16 A.

LIST OF OPTIONAL EQUIPMENT:

- Gloves for protective screen (for Plexiglas screen only);
- Stand-alone fan;
- Gas supply valve;
- Water supply valve;
- Mixer;
- Polypropylene sink drains (250x100x150 mm; 300x300x200 mm; 400x400x300 mm);
- Built-in heating panel (glass ceramic);
- Explosion-proof lighting fixture;
- Electrical socket block with automatic shut-off system 16 A;
- Suspended cabinets TD-P for the storage of acids* (see page 48);
- Cabinet exhaust.

Model	Dimensions (WxDxH), mm	Ceramic	Jointless granite	Lab HPL	Polypropylene	Stainless steel
LK-900 SVP	900x690x2,000					
LK-1200 SVP	1,200x690x2,000					
LK-1500 SVP	1,500x690x2,000					
LK-1800 SVP	1,800x690x2,000					



LK-1500 SVP

Exhaust fume chambers

Laboratory exhaust fume chamber

The cabinet's exhaust fume chamber is made of moisture-resistant laminated chipboard. It has two exhaust points – in the upper and lower sections of the workspace. The chamber is installed on solid dismountable metal with polymeric coating. In order to compensate for any possible floor unevenness, the frame is equipped with adjustable legs (0-30 mm).

The chamber is suitable for the performance of most laboratory analyses requiring the use of toxic substances. It has practical limitations when using concentrated acids and alkalis, as well as constant high-humidity conditions.



LIST OF STANDARD EQUIPMENT:

- Protective screen made of shock-proof “triplex” glass (or Plexiglas – on request), with the possibility of adjustment to any height;
- Fluorescent lamp 2x18 W (level of protection IP65);
- Splash-proof electrical sockets 220 V (2 pcs.);
- Steel flange for air vent connection (D = 200 mm);
- Anti-spillage curb;
- Automatic shutoff system 16 A.

LIST OF OPTIONAL EQUIPMENT:

- Gloves for protective screen (for Plexiglas screen only);
- Stand-alone fan;
- Gas supply valve;
- Water supply valve;
- Mixer;
- Polypropylene sink drains (250x100x150 mm; 300x300x200 mm; 400x400x300 mm);
- Built-in heating panel (glass ceramic);
- Explosion-proof lighting fixture;
- Electrical socket block with automatic shut-off system 16 A;
- Suspended cabinets TD* (see pages 44-46);
- Cabinet exhaust.

Model	Dimensions (WxDxH), mm	Ceramic	Lab HPL	Jointless granite	Stainless steel
LK-900 SV	900x690x2,000				
LK-1200 SV	1,200x690x2,000				
LK-1500 SV	1,500x690x2,000				
LK-1800 SV	1,800x690x2,000				

LK-1500 SV

* Cabinet LK-1500 TD-V is not included on the list of standard equipment

All prices shown in GBP, VAT included.

* Reference dimensions – see page 12

Demonstrational exhaust fume chamber

The cabinet's exhaust fume chamber is made of metal frame with polymeric coating and Plexiglas panels located at the side and back walls. It has two exhaust points – in the upper and lower sections of the workspace. The chamber is installed on solid dismountable metal with grey polymeric coating. In order to compensate for any possible floor unevenness, the frame is equipped with adjustable legs (0-30 mm).

The cabinet is designed mainly for the performance of demonstrational analyses involving toxic substances, but can also be used as a regular exhaust fume chamber. It has practical limitations when using concentrated acids and alkalis, as well as constant high-humidity conditions.

LIST OF STANDARD EQUIPMENT:

- Protective screen made of shock-proof “triplex” glass (or Plexiglas – on request), with the possibility of adjustment to any height;
- Fluorescent lamp 2x18 W (level of protection IP65);
- Splash-proof electrical sockets 220 V (2 pcs.);
- Steel flange for air vent connection (D = 200 mm);
- Anti-spillage curb;
- Automatic shutoff system 16 A.

LIST OF OPTIONAL EQUIPMENT:

- Gloves for protective screen (for Plexiglas screen only);
- Stand-alone fan;
- Gas supply valve;
- Water supply valve;
- Mixer;
- Polypropylene sink drains (250x100x150 mm; 300x300x200 mm; 400x400x300 mm);
- Built-in heating panel (glass ceramic);
- Explosion-proof lighting fixture;
- Electric socket block with automatic shut-off system 16 A;
- Suspended cabinets TD* (see pages 44-46).

Model	Dimensions (WxDxH), mm	Ceramic	Jointless granite	Lab HPL	Stainless steel
LK-900 SVD	900x690x2,000				
LK-1200 SVD	1,200x690x2,000				
LK-1500 SVD	1,500x690x2,000				
LK-1800 SVD	1,800x690x2,000				



Exhaust fume chambers

Exhaust fume chambers for muffle furnaces

The cabinet's exhaust fume chamber is made of moisture-resistant laminated chipboard. The work surface, as well as the side and back walls of the chamber, are lined with tiled porcelain granite. This chamber has a single exhaust point – in the upper section of the work surface. The chamber is installed on solid dismountable metal with polymeric coating. In order to compensate for any possible floor unevenness, the frame is equipped with adjustable legs (0-30 mm).

Designed mainly for the installation of muffle furnaces and drying cabinets.

LIST OF STANDARD EQUIPMENT:

- Splash-proof electrical sockets 220 V (2 pcs.);
- Steel flange for air vent connection (D = 200 mm);
- Automatic shutoff system 16 A.

LIST OF OPTIONAL EQUIPMENT:

- Protective screen made of shock-proof “triplex” glass (or Plexiglas – on request), with the possibility of adjustment to any height;
- Gloves for protective screen (for Plexiglas screen only);
- Fluorescent lamp 2x18 W (level of protection IP65);
- Stand-alone fan;
- Explosion-proof lighting fixture;
- Electric socket block with automatic shut-off system 16 A;
- Suspended cabinets TD* (see pages 44-46);
- Cabinet exhaust.



Model	Dimensions (WxDxH), mm	Work chamber dimensions (WxDxH), mm	Without protective screen	With protective screen
LK-900 SVM	900x690x2,000	636x600x770		
LK-1200 SVM	1,200x690x2,000	936x600x770		
LK-1500 SVM	1,500x690x2,000	1,236x600x770		

LK-1200 SVM

* Cabinet LK-1200 TD-V is not included on the list of standard equipment

All prices shown in GBP, VAT included.

* Reference dimensions – see page 12

Exhaust hoods

Exhaust hoods differ in their external appearance and method of mounting:

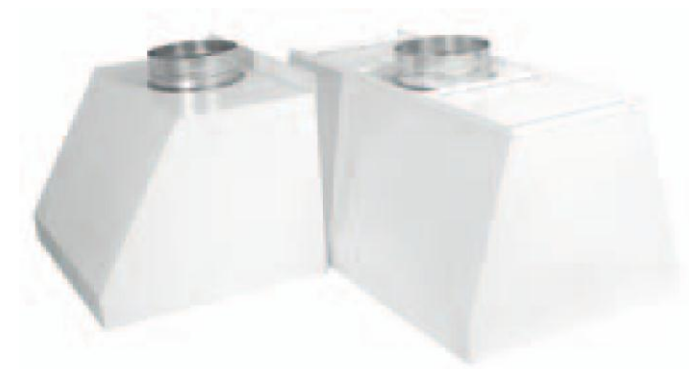
- ZVN Hoods – are designed to be mounted on the wall above the exhaust area;
- ZVP Hoods – are designed to be mounted on the ceiling assembly above the exhaust area.

All types of hoods are made of steel with polymeric coating.

LIST OF OPTIONAL EQUIPMENT:

- Stand-alone fan.

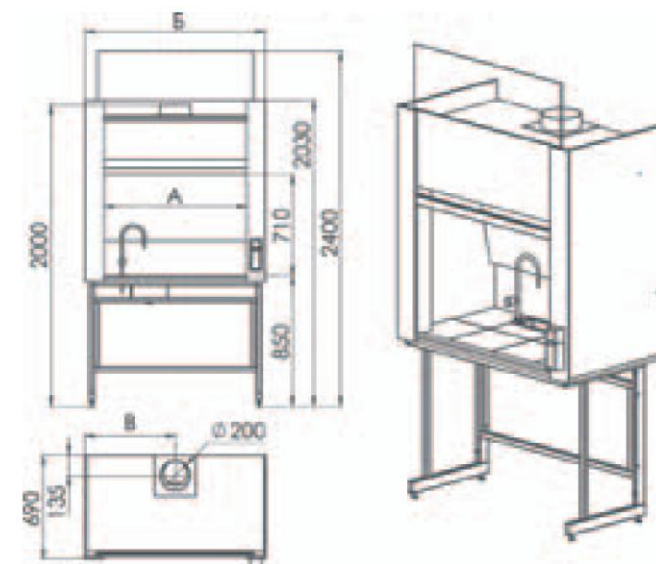
Model	Dimensions (WxDxH), mm	Price, rub. VAT included
LK-600 ZVN	600x500x440	
LK-900 ZVN	900x500x440	
LK-600 ZVP	600x500x440	
LK-900 ZVP	900x500x440	



LK-600 ZVN and LK-900 ZVP

Reference dimensions of exhaust fume chambers, mm:

Model	Size A	Size B	Size C
LK-900 SV, SVP, SVD, SVM	660	900	450
LK-1200 SV, SVP, SVD, SVM	960	1,200	600
LK-1500 SV, SVP, SVD, SVM	1,260	1,500	750
LK-1800 SV, SVP, SVD	1,560	1,800	900







Laboratory workbenches

Laboratory workbench

The workbench is made of solid dismountable metal frame with polymeric coating and work surface. Work-surface materials can be chosen from among several available options (see table). In order to compensate for any possible floor unevenness, the frame is equipped with adjustable legs (0-30 mm). Can be equipped with various filing cabinets (not included on the list of standard equipment).

Permissible work-surface distributed load – up to 250 kg.

LIST OF OPTIONAL EQUIPMENT:

- electric sockets 220 V (2 pcs.);
- suspended or rolling filing cabinets;
- keyboard shelf.

Model	Dimensions (WxDxH), mm	Ceramic	Lab HPL	CPL	Stainless steel
LK-600 SL	600x600x750 600x600x850				
LK-900 SL	900x600x750 900x600x850				
LK-1200 SL	1,200x600x750 1,200x600x850				
LK-1500 SL	1,500x600x750 1,500x600x850				
LK-1800 SL	1,800x600x750 1,800x600x850				

Laboratory workbench with shelf

The workbench is made of solid dismountable metal frame with grey polymeric coating; includes a cabinet, a shelf made of laminated chipboard and a work surface. Work-surface materials can be chosen from among several available options (see table). In order to compensate for any possible floor unevenness, the frame is equipped with adjustable legs (0-30 mm). Can be equipped with various filing cabinets (not included on the list of standard equipment).

Permissible work-surface distributed load – up to 250 kg.

LIST OF OPTIONAL EQUIPMENT:

- fluorescent lamp 15 W with two built-in sockets and switch;
- suspended or rolling filing cabinets;
- electric sockets 220 V (2 pcs.).

Model	Dimensions (WxDxH), mm	Ceramic	Lab HPL	CPL	Stainless steel
LK-900 SM	900x630x1,170/750 900x630x1,270/850				
LK-1200 SM	1,200x630x1,170/750 1,200x630x1,270/850				
LK-1500 SM	1,500x630x1,170/750 1,500x630x1,270/850				
LK-1800 SM	1,800x630x1,170/750 1,800x630x1,270/850				

All prices shown in GBP, VAT included.



LK-1200 SL

* Filing cabinets LK-400 TYA (to the left) and LK-400 TD (to the right) are not included on the list of standard equipment



LK-1200 SM

* Filing cabinets LK-400 TPYA-V (to the left) and LK-400 TPD-V (to the right) are not included on the list of standard equipment

Laboratory workbench with upper filing cabinet

The workbench is made of solid dismountable metal frame with grey polymeric coating; includes an upper filing cabinet made of laminated chipboard and a work surface. The shelves of the filing cabinet are convenient for the storage of documentation (designed to fit A4-size files) and various laboratory equipment. Work-surface materials can be chosen from among several available options (see table). In order to compensate for any possible floor unevenness, the frame is equipped with adjustable legs (0-30 mm). Can be equipped with various filing cabinets (not included on the list of standard equipment).

Permissible work-surface distributed load – up to 250 kg.

LIST OF OPTIONAL EQUIPMENT:

- fluorescent lamp 15 W with two built-in sockets and switch;
- suspended or rolling filing cabinets;
- electric sockets 220 V (2 pcs.);
- keyboard shelf.

Model	Dimensions (WxDxH), mm	Ceramic	Lab HPL	CPL	Stainless steel
LK-900 SN	900x630x1,850/750 900x630x1,950/850				
LK-1200 SN	1,200x630x1,850/750 1,200x630x1,950/850				
LK-1500 SN	1,500x630x1,850/750 1,500x630x1,950/850				
LK-1800 SN	1,800x630x1,850/750 1,800x630x1,950/850				

Laboratory workbench with two shelves

The workbench is made of solid dismountable metal frame with grey polymeric coating; includes shelves made of laminated chipboard and a work surface. Work-surface materials can be chosen from among several available options (see table). In order to compensate for any possible floor unevenness, the frame is equipped with adjustable legs (0-30 mm). Can be equipped with various filing cabinets (not included on the list of standard equipment).

Permissible work-surface distributed load – up to 250 kg.

LIST OF STANDARD EQUIPMENT:

- fluorescent lamp 15 W with two built-in sockets and switch.

LIST OF OPTIONAL EQUIPMENT:

- suspended or rolling filing cabinets;
- electric sockets 220 V (2 pcs.);
- keyboard shelf.

Model	Dimensions (WxDxH), mm	Ceramic	Lab HPL	CPL	Stainless steel
LK-900 SP	900x630x1,450/750 900x630x1,550/850				
LK-1200 SP	1,200x630x1,450/750 1,200x630x1,550/850				
LK-1500 SP	1,500x630x1,450/750 1,500x630x1,550/850				
LK-1800 SP	1,800x630x1,450/750 1,800x630x1,550/850				



LK-1200 SN

* LK-400 TPYA-V filing cabinet is not included on the list of standard equipment



LK-1200 SP

* LK-1200 TD filing cabinet is not included on the list of standard equipment

Laboratory workbenches

Chemical laboratory workbench (with service attachment)

The workbench is made of solid dismountable metal frame with grey polymeric coating; includes a service attachment with two shelves made of laminated chipboard and a work surface. Work-surface materials can be chosen from among several available options (see table). In order to compensate for any possible floor unevenness, the frame is equipped with adjustable legs (0-30 mm). Can be equipped with various filing cabinets (not included on the list of standard equipment), as well as with a drain sink, water- and gas-supply valves, which are to be mounted to the service attachment.

Permissible work-surface distributed load – up to 250 kg.

LIST OF STANDARD EQUIPMENT:

- fluorescent lamp 15 W with two built-in sockets and switch.

LIST OF OPTIONAL EQUIPMENT:

- suspended or rolling filing cabinets;
- electric sockets 220 V (2 pcs.);
- water-supply valve (for workbenches with Ceramic, Wilsonart and stainless steel work surfaces);
- gas-supply valve;
- Polypropylene drain sink (250x100x150 mm) (for workbenches with Ceramic, Wilsonart and stainless steel work surfaces);
- keyboard shelf.

Model	Dimensions (WxDxH), mm	Ceramic	Lab HPL	CPL	Stainless steel
LK-900 SPT	900x900x1,450/750 900x900x1,550/850				
LK-1200 SPT	1,200x900x1,450/750 1,200x900x1,550/850				
LK-1500 SPT	1,500x900x1,450/750 1,500x900x1,550/850				
LK-1800 SPT	1,800x900x1,450/750 1,800x900x1,550/850				

Titration workbench

The workbench is made of solid dismountable metal frame with polymeric coating; includes a titration attachment with light screen and work surface. Work-surface materials can be chosen from among several available options (see table). In order to compensate for any possible floor unevenness, the frame is equipped with adjustable legs (0-30 mm). Can be equipped with various filing cabinets (not included on the list of standard equipment), as well as with a drain sink, water- and gas-supply valves, which are to be mounted to the service attachment.

Permissible work-surface distributed load – up to 250 kg.

LIST OF STANDARD EQUIPMENT:

- electric sockets 220 V (2 pcs.);
- light screen with fastening rods for drop-tube securing.

LIST OF OPTIONAL EQUIPMENT:

- locking tabs for drop-tube securing;
- suspended or rolling filing cabinets;
- electric sockets 220 V (2 pcs.).

Model	Dimensions (WxDxH), mm	Number of rods for drop tubes, pcs.	Ceramic	Lab HPL	CPL	Stainless steel
LK-900 ST	900x630x1,450/750 900x630x1,550/850					
LK-1200 ST	1,200x630x1,450/750 1,200x630x1,550/850					
LK-1500 ST	1,500x630x1,450/750 1,500x630x1,550/850					
LK-1800 ST	1,800x630x1,450/750 1,800x630x1,550/850					



LK-1200 SPT

* LK-400 TD filing cabinet is not included on the list of standard equipment



LK-1200 ST

* LK-400 TYA filing cabinet is not included on the list of standard equipment

All prices shown in GBP, VAT included.

Island workbench

The workbench is made of solid dismountable metal frame with grey polymeric coating; includes a service attachment with two shelves made of laminated chipboard and a work surface. Work-surface materials can be chosen from among several available options (see table). In order to compensate for any possible floor unevenness, the frame is equipped with adjustable legs (0-30 mm). Can be equipped with various filing cabinets (not included on the list of standard equipment), as well as with a drain sink, water- and gas-supply valves, which are to be mounted to the service attachment.

Permissible work-surface distributed load – up to 250 kg.

LIST OF STANDARD EQUIPMENT:

- fluorescent lamp 15 W with two built-in sockets and switch.

LIST OF OPTIONAL EQUIPMENT:

- polypropylene drain sink (250x100x150 mm) (for workbenches with Ceramic, Wilsonart and stainless steel work surfaces);
- water-supply valve (for workbenches with Ceramic, Wilsonart and stainless steel work surfaces);
- gas-supply valve;
- suspended or rolling filing cabinets;
- electric sockets 220 V (2 pcs.);
- keyboard shelf.

Model	Dimensions (WxDxH), mm	Ceramic	Lab HPL	CPL	Stainless steel
LK-900 SO	900x1,500x1,450/750 900x1,500x1,550/850				
LK-1200 SO	1,200x1,500x1,450/750 1,200x1,500x1,550/850				
LK-1500 SO	1,500x1,500x1,450/750 1,500x1,500x1,550/850				
LK-1800 SO	1,800x1,500x1,450/750 1,800x1,500x1,550/850				

Corner laboratory workbench (on load-bearing frame)

The workbench is made of solid dismountable metal frame with grey polymeric coating. Work-surface materials can be chosen from among several available options (see table). In order to compensate for any possible floor unevenness, the frame is equipped with adjustable legs (0-30 mm). Can be equipped with various filing cabinets (not included on the list of standard equipment). This workbench is designed to be installed in the lab corner independently or in combination with other laboratory workbenches. That's why this workbench has two dimension types:

- Workbench with 600-mm contact-edge depth designed for installation in combination with LK-... SL and LK-1200 SV workbenches;
- Workbench with 630-mm contact-edge depth designed for installation in combination with LK-... SM, LK-... SP, LK-... SN, LK... ST workbenches.

Permissible work-surface distributed load – up to 250 kg.

LIST OF OPTIONAL EQUIPMENT:

- suspended or rolling filing cabinets.

Model	Dimensions (WxDxH), mm	Ceramic	Lab HPL	CPL
LK-900/600 USK	900x600/600x750 900x600/600x850			
LK-900/630 USK	900x630/630x750 900x630/630x850			

All prices shown in GBP, VAT included.



LK-1800 SO

* LK-1800 TD filing cabinet is not included on the list of standard equipment



LK-900/600 USK

* LK-400 TYA filing cabinet is not included on the list of standard equipment



LK-600 SV

Laboratory workbenches

Weighting workbench

The workbench is made of solid dismountable metal frame with polymeric coating and a work surface made from 30-mm-thick natural granite.

Work surface is installed on special rubber dampers in order to absorb possible vibrations.

In order to compensate for any possible floor unevenness, the frame is equipped with adjustable legs (0-30 mm).

LIST OF OPTIONAL EQUIPMENT:

- electric sockets 220 V (2 pcs.);

Model	Dimensions (WxDxH), mm	Work surface	Price, rub. VAT included
LK-600 SV	600x400x750	Granite	
	600x400x850		
LK-900 SV	900x600x750	Granite	
	900x600x850		



LK-1200 SV

Combined weighting workbench

This workbench is a combination of laboratory workbench with melamine work surface and weighting workbench. In order to compensate for any possible floor unevenness, the frames of both tables are equipped with adjustable legs (0-30 mm).

LIST OF OPTIONAL EQUIPMENT:

- electric sockets 220 V (2 pcs.);

Model	Dimensions (WxDxH), mm	Work surface	Price, rub. VAT included
LK-1200 SV	1,200x600x750	Granite Melamine	
	1,200x600x850		

Laboratory workbenches

Cabinet workbench with doors

This workbench is comprised of a drawer with one section and a shelf, made of melamine (laminated chipboard), and a work surface (see table). The cabinet workbench is installed on solid dismountable metal frame with polymeric coating. In order to compensate for any possible floor unevenness, the frame is equipped with adjustable legs (0-30 mm).

Permissible work-surface distributed load – up to 100 kg.

LIST OF OPTIONAL EQUIPMENT:

- lock;
- door check for the “smooth” closing of the doors.

Model	Dimensions (WxDxH), mm	Ceramic	Lab HPL	CPL	Stainless steel
LK-900 SL-T	900x600x750 900x600x850				
LK-1200 SL-T	1 200x600x750 1,200x600x850				



LK-900 SL-T

Cabinet workbench with doors and drawer

This workbench is comprised of a cabinet with one section and a big pullout drawer. The cabinet is made of melamine (laminated chipboard) and a work surface (see table). The cabinet workbench is installed on solid dismountable metal frame with polymeric coating. In order to compensate for any possible floor unevenness, the frame is equipped with adjustable legs (0-30 mm).

Permissible work-surface distributed load – up to 100 kg.

LIST OF OPTIONAL EQUIPMENT:

- lock;
- door check for the “smooth” closing of the doors.

Model	Dimensions (WxDxH), mm	Ceramic	Lab HPL	CPL	Stainless steel
LK-900 SL-T (with drawer)	900x600x750 900x600x850				



LK-900 SL-T (with drawer)



Movable workbench

This workbench is comprised of a solid dismountable metal frame with polymeric coating and work surface. Work-surface materials can be chosen from among several available options (see table). Table moving is made possible by the installation of 4 rollers (75-mm diameter) into the frame, two of which are equipped with a locking device. Is additionally equipped with a lower shelf made of the same material as the work surface.

Permissible work-surface distributed load – up to 180 kg.

LIST OF OPTIONAL EQUIPMENT:

- shelf.



LK-1200 SLP

PRICE OF THE WORKBENCH EQUIPPED WITH SHELF:

Model	Dimensions (WxDxH), mm	Ceramic	Lab HPL	CPL
LK-600 SLP	600x600x750 600x600x850			
LK-900 SLP	900x600x750 900x600x850			
LK-1200 SLP	1,200x600x750 1,200x600x850			

Writing/Computer desk

Made of laminated chipboard. This desk is comprised of a work surface, two side panels and an underframe. The width of the work surface is 22 mm. Can be used in combination with rolling filing cabinets of all dimension-types.

LIST OF OPTIONAL EQUIPMENT:

- pullout keyboard shelf;
- PC base unit support;
- rolling filing cabinets.



LK-1200 S

All prices shown in GBP, VAT included.

* Keyboard shelf and PC base unit support are not included on the list of standard equipment

Laboratory cabinets

Cabinet for Labware LK-800 SLP

Has two different design options:

- from laminated chipboard;
- from steel with polymeric coating (lock with keys included in the standard option).

Has four hinged doors (upper – from glass) and four shelves. The cabinet is installed on a metal frame with polymeric coating. In order to compensate for any possible floor unevenness, the frame is equipped with adjustable legs (0-30 mm).

LIST OF OPTIONAL EQUIPMENT:

- door check for the “smooth” closing of the doors (only for cabinets made from laminated chipboard).



LK-800 SLP

Model	Dimensions (WxDxH), mm	Laminated chipboard	Steel
LK-800 SLP	800x450x2,010		

Cabinet for Labware LK-400 SLP

This cabinet is made from laminated chipboard.

Has two hinged doors (upper – from glass) and four shelves. The cabinet is installed on a metal frame with polymeric coating.

In order to compensate for any possible floor unevenness, the frame is equipped with adjustable legs (0-30 mm).

LIST OF OPTIONAL EQUIPMENT:

- door check for the “smooth” closing of the doors.



LK-400 SLP

Model	Dimensions (WxDxH), mm	Laminated chipboard	Steel
LK-400 SLP	400x450x2,010		

All prices shown in GBP, VAT included.

Cabinet for laboratory instruments LK-800 SP

Has two different design options:

- from laminated chipboard;
- from steel with polymeric coating (lock with keys included in the standard option).

Has four doors and four shelves. The cabinet is installed on a metal frame with polymeric coating. In order to compensate for any possible floor unevenness, the frame is equipped with adjustable legs (0-30 mm).

LIST OF OPTIONAL EQUIPMENT:

- door check for the "smooth" closing of the doors (only for cabinets made from laminated chipboard).

Model	Dimensions (WxDxH), mm	Laminated chipboard	Steel
LK-800 SP	800x450x2,010		



LK-800 SP

Cabinet for laboratory instruments LK-400 SP

This cabinet is made from laminated chipboard.

Has two hinged doors and four shelves. The cabinet is installed on a metal frame with polymeric coating. In order to compensate for any possible floor unevenness, the frame is equipped with adjustable legs (0-30 mm).

LIST OF OPTIONAL EQUIPMENT:

- door check for the "smooth" closing of the doors.

Model	Dimensions (WxDxH), mm	Laminated chipboard	Steel
LK-400 SP	400x450x2,010		



LK-400 SP

Laboratory cabinets

Reagents cabinet LK-800 SR

Has two different design options:

- from laminated chipboard;
- from steel with polymeric coating (lock with keys included in the standard option).

Has four doors and four shelves. The cabinet is installed on a metal frame with polymeric coating. In order to compensate for any possible floor unevenness, the frame is equipped with adjustable legs (0-30 mm). The upper cover of the cabinet has a flanged opening with the flange made from galvanized steel allowing for connection to vent-off systems. Diameter of the flange is 200 mm.

LIST OF OPTIONAL EQUIPMENT:

- door check for the "smooth" closing of the doors (only for cabinets made from laminated chipboard);
- stand-alone fan.

Model	Dimensions (WxDxH), mm	Laminated chipboard	Steel
LK-800 SR	800x450x2,010		



LK-800 SR

Reagents cabinet LK-400 SR

This cabinet is made from laminated chipboard.

Has two doors and four shelves. The cabinet is installed on a metal frame with polymeric coating. In order to compensate for any possible floor unevenness, the frame is equipped with adjustable legs (0-30 mm). The upper cover of the cabinet has a flanged opening with the flange made from galvanized steel allowing for connection to vent-off systems. Diameter of the flange is 200 mm.

LIST OF OPTIONAL EQUIPMENT:

- door check for the "smooth" closing of the doors;
- stand-alone fan.

Model	Dimensions (WxDxH), mm	Laminated chipboard	Steel
LK-400 SR	400x450x2,010		



LK-400 SR

Wardrobe cabinet LK-800 SG

Has two different design options:

- from laminated chipboard;
- from steel with polymeric coating (lock with keys included in the standard option).

Has two doors, shelf and hanger rail. The cabinet is installed on a metal frame with polymeric coating. In order to compensate for any possible floor unevenness, the frame is equipped with adjustable legs (0-30 mm). Cabinet made from laminated chipboard has one section, steel cabinet – two sections.

LIST OF OPTIONAL EQUIPMENT:

- door check for the “smooth” closing of the doors (only for cabinets made from laminated chipboard).

Model	Dimensions (WxDxH), mm	Laminated chipboard	Steel
LK-800 SG	800x450x2,010		



LK-800 SG

Wardrobe cabinet LK-400 SG

This cabinet is made from laminated chipboard.

Has one door, shelf and hanger rail. The cabinet is installed on a metal frame with polymeric coating. In order to compensate for any possible floor unevenness, the frame is equipped with adjustable legs (0-30 mm).

LIST OF OPTIONAL EQUIPMENT:

- door check for the “smooth” closing of the doors;
- stand-alone fan.

Model	Dimensions (WxDxH), mm	Laminated chipboard	Steel
LK-400 SG	400x450x2,010		



LK-400 SG



LK-600 SRP

Laboratory cabinets

Acid-proof reagents cabinet

The cabinet is made of monolithic polypropylene sheet, featuring very high chemical resistance characteristics. The cabinet is equipped with two pullout drawers and one section with two shelves, with a closing door. The cabinet is installed on a metal frame with polymeric coating. In order to compensate for any possible floor unevenness, the frame is equipped with adjustable legs (0-30 mm). The upper cover of the cabinet has a flanged opening with the flange made from galvanized steel allowing for connection to vent-off systems. Diameter of the flange is 200 mm.

Recommended for storing aggressive chemical substances, including concentrated acids. Unlike metal cabinets, this cabinet is resistant to corrosion.

Model	Dimensions (WxDxH), mm	Price, rub. VAT included
LK-600 SRP	600x520x2,010	

Filing cabinet

This cabinet is made from laminated chipboard. The cabinet is installed on a metal frame with polymeric coating. In order to compensate for any possible floor unevenness, the frame is equipped with adjustable legs (0-30 mm).

Cabinet with 800-mm width is equipped with two lower hinged doors and four shelves.

Cabinet with 400-mm width is equipped with one hinged door and four shelves.

LIST OF OPTIONAL EQUIPMENT:

- door check for the "smooth" closing of the doors.

Model	Dimensions (WxDxH), mm	Laminated chipboard	Steel
LK-400 SDO	400x450x2,010		
LK-800 SDO	800x450x2,010		



LK-800 SDO

All prices shown in GBP, VAT included.

Suspended cabinet (with two sections)

This cabinet is made from laminated chipboard.

Cabinet with 900- and 1,200-mm width have one closed and one open section. Each section is equipped with a shelf.

LIST OF OPTIONAL EQUIPMENT:

- door check for the “smooth” closing of the doors.

Model	Dimensions (WxDxH), mm	Laminated chipboard	Steel
LK-900 SN	900x320x700		
LK-1200 SN	1,200x320x700		



LK-1200 SN

Suspended cabinet (with three sections)

This cabinet is made from laminated chipboard.

Cabinet with 1,500- and 1,800-mm width have two closed and one open section. Each section is equipped with a shelf.

LIST OF OPTIONAL EQUIPMENT:

- door check for the “smooth” closing of the doors.

Model	Dimensions (WxDxH), mm	Laminated chipboard	Steel
LK-1500 SN	1,500x320x700		
LK-1800 SN	1,800x320x700		



LK-1500 SN







LK-600 SMS

* Drying rack is not included on the list of standard equipment

Washers

Laboratory washer (1 sink – Stainless steel, 140-mm depth, frame material – laminated chipboard)

The work surface of the washer is solid-drawn, with a single sink 140 mm in depth. Material – stainless steel. The body of the washer is made from moisture-resistant laminated chipboard, has one section. The washer is installed on a metal frame with polymeric coating. In order to compensate for any possible floor unevenness, the frame is equipped with adjustable legs (0-30 mm).

The washer can be equipped with a rack for drying dishes.

LIST OF STANDARD EQUIPMENT:

- mixer – 1 pc.;
- siphon with corrugated hose for draining;
- water-supply hoses.

LIST OF OPTIONAL EQUIPMENT:

- drying rack with metal mounting frame;
- drying rack attached to the wall;
- door check for the “smooth” closing of the doors;
- emergency fountain for eye rinsing.



LK-120 SMS

* Drying rack is not included on the list of standard equipment

Model	Dimensions (WxDxH), mm	Number of sinks	Laminated chipboard
LK-600 SMS	600x600x850	1	
LK-800 SMS	800x600x850	1	
LK-1200 SMS	1,200x600x850	2	

Washers

Deep laboratory washer (1 sink – Stainless steel, 300-mm depth, frame material – steel)

The work surface of the washer is solid-drawn, with a single sink 300 mm in depth. Material – stainless steel.

The body of the washer is made from steel with polymeric coating, has one section.

The washer is installed on a metal frame. In order to compensate for any possible floor unevenness, the frame is equipped with adjustable legs (0-30 mm).

The washer can be equipped with a rack for drying dishes.

LIST OF STANDARD EQUIPMENT:

- mixer – 1 pc.;
- siphon with corrugated hose for draining;
- water-supply hoses.

LIST OF OPTIONAL EQUIPMENT:

- drying rack with metal mounting frame;
- drying rack attached to the wall;
- emergency fountain for eye rinsing.



LK-900 SMS-G

* Drying rack is not included on the list of standard equipment



LK-1200 SMS-G

* Drying rack is not included on the list of standard equipment

Model	Dimensions (WxDxH), mm	Number of sinks	Steel
LK-600 SMS-G (steel)	600x600x850	1	
LK-900 SMS-G (steel)	900x600x850	1	
LK-1200 SMS-G (steel)	1,200x600x850	1	
LK-1200 SMS-G (steel)	1,200x600x850	2	
LK-1500 SMS-G (steel)	1,500x600x850	1	
LK-1500 SMS-G (steel)	1,500x600x850	2	

All prices shown in GBP, VAT included.



LK-900 SMS-PV

* Emergency fountain for eye rinsing is not included on the list of standard equipment

Washers

Laboratory chemical washer with inlaid sinks

(1 inlaid sink – polypropylene, 300-mm depth, frame material – polypropylene)

The work surface of the washer is made from polypropylene, with one inlaid 300-mm-deep polypropylene sink. The body of the washer is made from moisture-resistant laminated chipboard, has one section. The washer is installed on a metal frame with polymeric coating. In order to compensate for any possible floor unevenness, the frame is equipped with adjustable legs (0-30 mm).

The washer can be equipped with a rack for drying dishes.

LIST OF STANDARD EQUIPMENT:

- mixer – 1 pc.;
- siphon with corrugated hose for draining;
- water-supply hoses.

LIST OF OPTIONAL EQUIPMENT:

- drying rack with metal mounting frame;
- drying rack attached to the wall;
- door check for the “smooth” closing of the doors;
- emergency fountain for eye rinsing.



LK-1200 SMS-PV

* Emergency fountain for eye rinsing is not included on the list of standard equipment

Model	Dimensions (WxDxH), mm	Number of sinks	Polypropylene
LK-600 SMS-PV	600x600x850	1	
LK-900 SMS-PV	900x600x850	1	
LK-1200 SMS-P	1,200x750x850	1	
LK-1200 SMS-P	1,200x750x850	2	
LK-1500 SMS-P	1,500x600x850	1	
LK-1500 SMS-P	1,500x600x850	2	





Filing cabinets

Rolling filing cabinet with drawers

This filing cabinet is made from laminated chipboard and can be equipped with three or four pullout drawers. It is installed on a roller support equipped with locking device.

Model	Dimensions (WxDxH), mm	Laminated chipboard	Steel
LK-400 TPYA-V (with 3 drawers)	400x470x720		
LK-400 TPYA-V (with 4 drawers)	400x470x720		

Rolling filing cabinet with door

This filing cabinet is made from laminated chipboard and has a hinged door and a shelf. It is installed on a roller support equipped with locking device.

LIST OF OPTIONAL EQUIPMENT:

- door check for the “smooth” closing of the doors.

Model	Dimensions (WxDxH), mm	Laminated chipboard	Steel
LK-400 TPD-V	400x470x720		

Suspended drawer

This drawer is made from laminated chipboard and is mounted under the work surface of all types of laboratory workbenches.

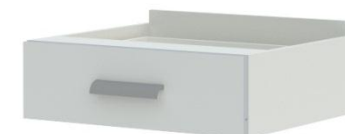
Model	Dimensions (WxDxH), mm	Laminated chipboard	Steel
LK-400 YA	432x420x200 (308x368x110 – inner dimensions)		



LK-400 TPYA-V



LK-400 TPD-V



LK-400 YA

Filing cabinets

Suspended filing cabinet with drawers

Has two different design options:

- from laminated chipboard;
- from steel with polymeric coating.

This file cabinet has three pullout drawers.

Used in combination with laboratory workbenches and exhaust fume chambers of all dimension-types.

File cabinet is equipped with a simple and reliable fixation system, allowing for the fast dismounting and mounting of the filing cabinet at any place along the length of the workbench or exhaust fume chamber.



LK-400 TYA (steel – to the left, laminated chipboard – to the right)

Model	Dimensions (WxDxH), mm	Laminated chipboard	Steel
LK-400 TYA	400x520x500		

Suspended filing cabinet with door

Has two different design options:

- from laminated chipboard;
- from steel with polymeric coating.

This filing cabinet has a hinged door and removable shelf.

Used in combination with laboratory workbenches and exhaust fume chambers of all dimension-types.

Filing cabinet is equipped with a simple and reliable fixation system, allowing for the fast dismounting and mounting of the filing cabinet at any place along the length of the workbench or exhaust fume chamber.



LK-400 TD (steel – to the left, laminated chipboard – to the right)

LIST OF OPTIONAL EQUIPMENT:

- door check for the “smooth” closing of the doors (only for filing cabinets made from laminated chipboard).

Model	Dimensions (WxDxH), mm	Laminated chipboard	Steel
LK-400 TD	400x520x500		

All prices shown in GBP, VAT included.

Suspended filing cabinet (with a single section)

Has two different design options:

- from laminated chipboard;
- from steel with polymeric coating.

Filing cabinet is equipped with a simple and reliable fixation system, allowing for the fast dismounting and mounting of the filing cabinet.

LIST OF OPTIONAL EQUIPMENT:

- shelf;
- door check for the "smooth" closing of the doors.

Model	Dimensions (WxDxH), mm	Suitable for the following models	Laminated chipboard	Steel
LK-900 TD	760x520x500	LK-900		
LK-1200 TD	1,070x520x500	LK-1200		

Suspended filing cabinet (with two big sections)

Has two different design options:

- from laminated chipboard;
- from steel with polymeric coating.

Filing cabinet is equipped with a simple and reliable fixation system, allowing for the fast dismounting and mounting of the filing cabinet.

LIST OF OPTIONAL EQUIPMENT:

- shelf;
- door check for the "smooth" closing of the doors.

Model	Dimensions (WxDxH), mm	Suitable for the following models	Laminated chipboard	Steel
LK-1500 TD	760x520x500	LK-1500		
LK-1800 TD	1,070x520x500	LK-1800		



LK-1200 TD



LK-1800 TD

Suspended acid-proof filing cabinet

This filing cabinet is designed for the storage of concentrated acids.

Filing cabinet design does not include any corrosive elements.

Filing cabinet is made from 15-mm-thick polypropylene sheet, has two sections and two sliding doors that move along the cabinet's slides.

It is equipped with a simple and reliable fixation system, allowing for the fast dismounting and mounting of the filing cabinet.

The cabinet is used mostly in combination with chemical exhaust fume chambers LK-900, 1200 SVP.

LIST OF OPTIONAL EQUIPMENT:

- shelf.

Model	Dimensions (WxDxH), mm	Suitable for the following models	Price, rub. VAT included	Price with additional shelf, rub. VAT included
LK-900 TD-P	765x555x500	LK-900 SVP		
LK-1200 TD-P	1,065x555x500	LK-1200 SVP		



LK-1200 TD-P

Suspended acid-proof filing cabinet (with two big sections)

This filing cabinet is designed for the storage of concentrated acids.

Filing cabinet design does not include any corrosive elements.

Filing cabinet is made from 15-mm-thick polypropylene sheet. It is comprised of two separate filing cabinets, each has two sections and two sliding doors that move along the cabinet's slides.

It is equipped with a simple and reliable fixation system, allowing for the fast dismounting and mounting of the filing cabinet.

The cabinet is used mostly in combination with chemical exhaust fume chambers LK-1500, 1800 SVP.

LIST OF OPTIONAL EQUIPMENT:

- shelf.

Model	Dimensions (WxDxH), mm	Suitable for the following models	Price, rub. VAT included	Price with additional shelf, rub. VAT included
LK-1800 TD-P	1,660x555x500	LK-1800 SVP		
LK-1500 TD-P	1,365x555x500	LK-1500 SVP		



LK-1500 TD-P







GEMA

Laboratory chairs

Chair GEMA

DESCRIPTION:

- seat and back material – soft-cast polyurethane (color: black);
- size of the seat – 460x450 mm, back – 305x400 mm;
- adjustable height using gas lift (500-690 mm);
- plastic rollers.

LIST OF OPTIONAL EQUIPMENT:

- rollers with rubber cover;
- stationary casters;
- chrome-plated five-star base;
- support ring for legs, with adjustable height;
- high gas lift instead of the standard one (570-820 mm)

Model	Description	Price, rub. VAT included
GEMA	Seat and back material – polyurethane, adjustable height	
Support ring		

Chair TEK0

DESCRIPTION:

- seat and back material – plastic (color: black);
- size of the seat – 460x390 mm, back – 450x320 mm;
- adjustable height using gas lift (500-690 mm);
- plastic rollers.

LIST OF OPTIONAL EQUIPMENT:

- rollers with rubber cover;
- armrests;
- stationary casters;
- chrome-plated five-star base;
- support ring for legs, with adjustable height;
- high gas lift instead of the standard one (570-820 mm).

Model	Description	Price, rub. VAT included
TEKO	Seat material – plastic, adjustable height	
Support ring		

All prices shown in GBP, VAT included.



TEKO

Chair S1

DESCRIPTION:

- seat and back material – plastic (color: grey);
- size of the seat – 460x410 mm, back – 460x270 mm;
- adjustable height using gas lift (500-690 mm);
- plastic rollers or stationary casters (optional).

LIST OF OPTIONAL EQUIPMENT:

- rollers with rubber cover;
- armrests;
- chrome-plated five-star base;
- support ring for legs, with adjustable height;
- high gas lift instead of the standard one (570-820 mm).

Model	Description	Price, rub. VAT included
S1	Seat and back material – plastic, adjustable height	
Support ring		



S1

* Armrests are not included on the list of standard equipment



Laboratory stools

Stool DECO

DESCRIPTION:

- seat material – soft-cast polyurethane (color: black);
- diameter of the seat – 340 mm;
- adjustable height using gas lift (500-690 mm);
- plastic rollers or stationary casters (optional).

LIST OF OPTIONAL EQUIPMENT:

- rollers with rubber cover;
- chrome-plated five-star base;
- support ring for legs, with adjustable height;
- high gas lift instead of the standard one (570-820 mm).

Model	Description	Price, rub. VAT included
DECO	Seat material – polyurethane, adjustable height	
Support ring		

Stool T2

DESCRIPTION:

- seat material – artificial leather or cloth (standard color: black, others: upon request);
- diameter of the seat – 330 mm;
- adjustable height using gas lift (500-690 mm);
- plastic rollers or stationary casters (optional).

LIST OF OPTIONAL EQUIPMENT:

- rollers with rubber cover;
- chrome-plated five-star base;
- support ring for legs, with adjustable height;
- high gas lift instead of the standard one (570-820 mm).

Model	Description	Price, rub. VAT included
T2	Seat material – artificial leather, adjustable height	
Support ring		



Metal racks

Rack ST-12

Open metal rack with grey polymeric coating. Depth of the rack can be chosen from among several options – 300, 400, 500 and 600 mm. Shelf height can be adjusted by 50-mm increments.

Standard set has 4 shelves, but, if necessary, the number of shelves can be increased.

Distributed load per shelf – 80 kg, total load per rack – up to 400 kg.

In order to compensate for any possible floor unevenness, adjustable legs (0-30 mm) are provided.

It is also possible to combine multiple racks together in larger sections.



ST-12

Model	Dimensions (WxDxH), mm	Price of the rack, rub. VAT included	Price of additional shelf, rub. VAT included
ST-12-3	1,000x300x2,000		
ST-12-4	1,000x400x2,000		
ST-12-5	1,000x500x2,000		
ST-12-6	1,000x600x2,000		

Rack with guard bars ST-13

Open metal rack with grey polymeric coating and guard bars at the sides and back wall. Depth of the rack can be chosen from among several options – 300, 400, 500 and 600 mm. Shelf height can be adjusted by 50-mm increments.

Standard set has 4 shelves, but, if necessary, the number of shelves can be increased.

Distributed load per shelf – 80 kg, total load per rack – up to 400 kg.

In order to compensate for any possible floor unevenness, adjustable legs (0-30 mm) are provided.

It is also possible to combine multiple racks together in larger sections.



ST-13

Model	Dimensions (WxDxH), mm	Price of the rack, rub. VAT included	Price of additional shelf, rub. VAT included
ST-13-3	1,000x300x2,000		
ST-13-4	1,000x400x2,000		
ST-13-5	1,000x500x2,000		
ST-13-6	1,000x600x2,000		

All prices shown GBP, VAT included.

N

S

GPS-COORDINATES

Latitude (illegible)

Longitude (illegible)

*Saint Petersburg***MANUFACTURING
FINISHED-PRODUCT WAREHOUSE:**

Address: Saint Petersburg, Shushary Township, long grey building at the very end of Pushkinskaya Street. Building sign – 81 Shkolnaya Str., letter "A".
Warehouse phone number: + 7 (812) 677 41 68 (warehouse supervisor)
Central office: +7 (812) 448 13 98

In order to guarantee product safety during transport, it can only be shipped in closed vehicles.

Product shipping hours:

Mon, Wed, Thu, Fri between 10:00 and 16:00
No product shipments on Tuesday!
Lunch break from 12:30 till 13:00

*Shushary*

Shushary

Shushary
cemetryConcrete
guardsConcrete
guards*Endless
field*

Ring road Saint Petersburg

Exit from Moskovskoe Highway
and Vitebskiy Avenue at signs
directing to Pushkinskaya Str.

Moskovskoe Highway

Shkolnaya Str.

Pushkinskaya Str.

Lenina Str.

Posetkovaya Str.

1st Balaevskiy Passage

Vitebskiy viaduct

Zheleznodorozhnaya Str.

2nd Balaevskiy Passage

Moskovskoe Highway

OFFICE:

195197, Saint Petersburg,
15/3 Kondratyevskiy Avenue, letter "Z",
Business Center "FERNAN LEGER",
office 326, 327.

Public transport from "Ploshchad Lenina"
metro station

- buses: Nos. 28, 37, 106, 107, 133.

- trolleys: Nos. 3, 38, 43.

- minibuses: Nos. 28, 107, 178, 198, 258.

Till stop "Leningradsky Metallichesky
Zavod"(LMZ)



Where to view our furniture

Exposition hall in Saint Petersburg:

15/3 Kondratyevskiy Avenue, letter "Z",
Business Center "FERNAN LEGER", office 327
"Ploshchad Lenina" metro station

Exposition hall in Moscow:

20/3 Nauchny Passage, 1st floor
Technopark "Slava"
"Kaluzhskaya" metro station

SpecBaltMebel, LLC (SBM, LLC)

Saint Petersburg
+7 (812) 448 13 98 / 326 11 57

Moscow
+7 (495) 646 80 57 / 646 80 57

All Russia
8 (800) 222 32 97

e-mail: info@simple-pro.com
www.simple-pro.com

Simple[®]pro
Laboratory furniture

Manufacturer reserves the right to alter the visual appearance, dimensions, equipping, materials, and any other characteristics of the furniture at its sole discretion. Therefore, actual furniture may differ from the versions presented in this catalogue. Manufacturer shall not be liable for any such differences. Actual specifications of the products to be specified directly at the time of order placement.



www.simple-pro.com

+7 (495) 411 91 27

+7 (812) 313 18 17

8 (800) 200 11 57

15/3 Kondratyevskiy Avenue,
"Fernan Leger", office 326/327
Saint Petersburg, 195197

